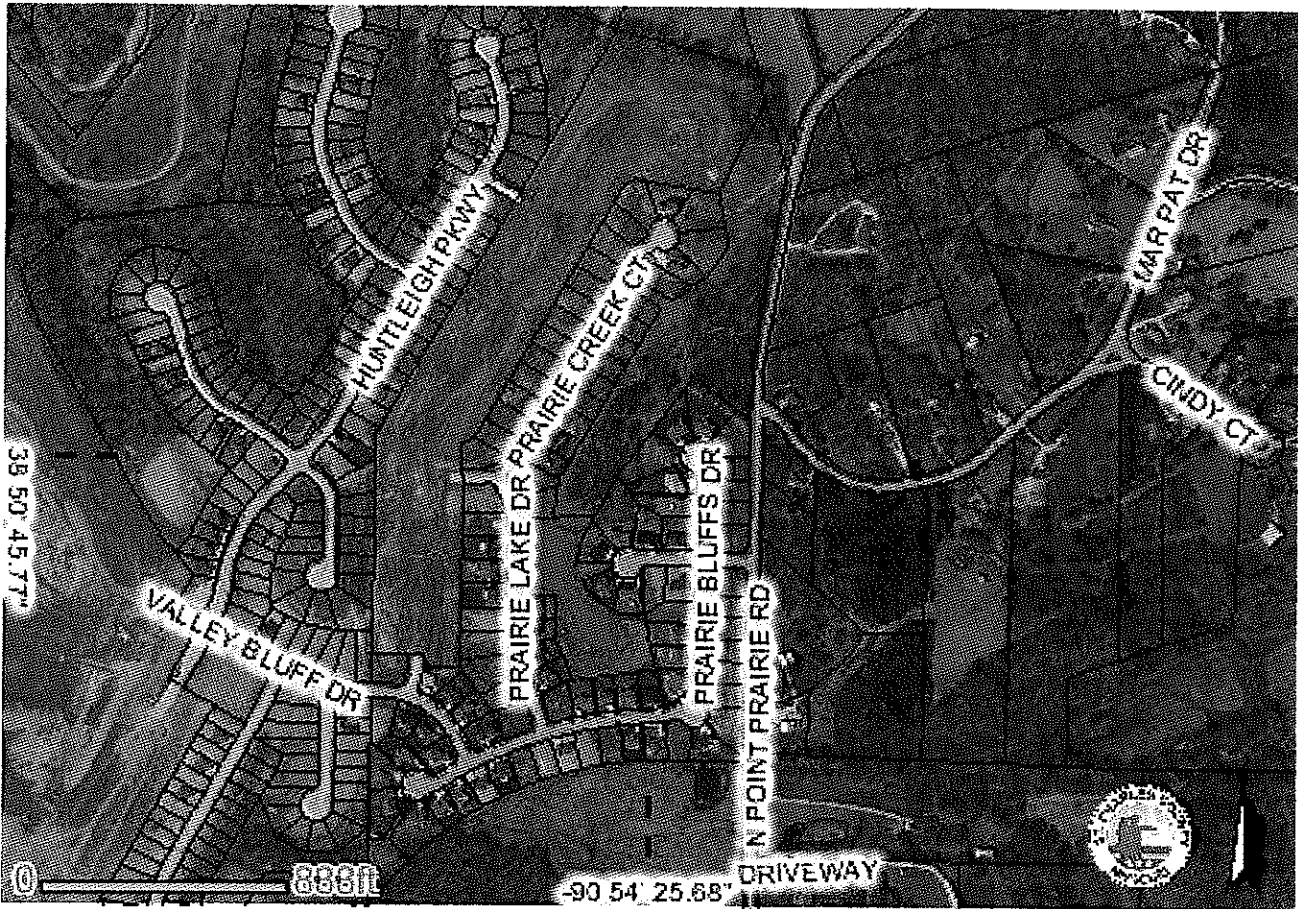




Information Systems Department
Geographic Information Systems
201 N. Second Street
St. Charles, MO 63301

St Charles County



St. Charles County Government makes no representations about the suitability of these data for any purpose. The data are provided "as is" without express or implied warranties, including warranties of merchantability and fitness for a particular purpose or noninfringement.

The user relieves St. Charles County Government and its respective officers, agents and employees of any liability for any and all damages resulting from use or misuse of these data including, but not limited to, incidental, consequential, special or indirect damages of any sort, whether arising in tort, contract or otherwise, even if St. Charles County Government has been informed of the possibility of such damages, or for any claim by any other party. Furthermore, in States that do not allow the exclusion or limitation of incidental or consequential damages, you may not use these data.

- Railway
 - Parcels
 - Roads
 - Streams
 - County Boundary
- 2010 Aerial Photo